

**OCT 04 - 10, 2021**

The Manhattan luxury real estate market, defined as all properties priced \$3.5M and above, saw 53 contracts signed this week, made up of 39 condos, 9 coops, and 5 houses. The previous week saw 32 deals. For more information or data, please reach out to a Compass agent.

**\$7,430,361**

Average Asking Price

**\$5,412,500**

Median Asking Price

**\$2,555**

Average PPSF

**3%**

Average Discount

**\$401,239,490**

Total Volume

**198**

Average Days On Market

27 East 11th Street in Greenwich Village entered contract this week, with a last asking price of \$29,995,000. This 25-foot wide townhouse has been impeccably renovated and spans approximately 9,000 square feet with 7 beds and 10 baths. It features over 2,000 square feet of outdoor garden, 2 terraces, a roof deck, an elevator, wood-burning and gas fireplaces, radiant heated flooring throughout, a temperature-controlled wine cellar, a circular staircase, large skylights and windows, high ceilings, a custom kitchen with high-end appliances and remote-controlled cabinetry, a full-floor primary suite with Juliette balcony and spa-like bath, and much more.

Also signed this week was the Penthouse at 455 West 19th Street in Chelsea, with a last asking price of \$22,750,000. Built in 2019, this new development condo is one of ten boutique residences, and spans 3,794 square feet with 4 beds and 3 full baths. It features panoramic views of the river and the city skyline, an outdoor lounge area, a custom Danish-designed kitchen, a rooftop garden and swimming pool with private elevator access, and much more. The building provides a full-time doorman, concierge, cold storage, and many other amenities.

**39**

Condo Deal(s)

**9**

Co-op Deal(s)

**5**

Townhouse Deal(s)

**\$6,681,654**

Average Asking Price

**\$7,473,889**

Average Asking Price

**\$13,428,000**

Average Asking Price

**\$5,045,000**

Median Asking Price

**\$5,250,000**

Median Asking Price

**\$8,950,000**

Median Asking Price

**\$2,618**

Average PPSF

**\$2,106**

Average PPSF

**\$2,067**

Average PPSF

**2,563**

Average SqFt

**2,342**

Average SqFt

**6,843**

Average SqFt



## 27 E 11 ST

Greenwich Village

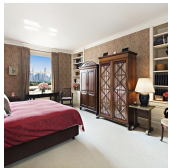
<b>Type</b>	Townhouse	<b>Status</b>	Contract	<b>Ask</b>	\$29,995,000	<b>Initial</b>	\$29,995,000
<b>SqFt</b>	9,000	<b>PPSF</b>	\$3,333	<b>Beds</b>	7	<b>Baths</b>	10
<b>Fees</b>	N/A	<b>DOM</b>	29				



## 455 W 19 ST #PH

Chelsea

<b>Type</b>	Condo	<b>Status</b>	Contract	<b>Ask</b>	\$22,750,000	<b>Initial</b>	\$22,750,000
<b>SqFt</b>	3,794	<b>PPSF</b>	\$5,997	<b>Beds</b>	4	<b>Baths</b>	3
<b>Fees</b>	\$13,413	<b>DOM</b>	203				



## 1030 5 AVE #12

Upper East Side

<b>Type</b>	Coop	<b>Status</b>	Contract	<b>Ask</b>	\$20,000,000	<b>Initial</b>	\$20,000,000
<b>SqFt</b>	1,025	<b>PPSF</b>	N/A	<b>Beds</b>	5	<b>Baths</b>	5
<b>Fees</b>	\$22,866	<b>DOM</b>	168				



## 15 CPW #38C

Lincoln Square

<b>Type</b>	Condo	<b>Status</b>	Contract	<b>Ask</b>	\$19,750,000	<b>Initial</b>	\$25,750,000
<b>SqFt</b>	2,761	<b>PPSF</b>	\$7,154	<b>Beds</b>	3	<b>Baths</b>	3.5
<b>Fees</b>	\$10,480	<b>DOM</b>	583				



## 10 RIVERSIDE BLVD #36B

Lincoln Square

<b>Type</b>	Condo	<b>Status</b>	Contract	<b>Ask</b>	\$17,000,000	<b>Initial</b>	\$17,000,000
<b>SqFt</b>	4,134	<b>PPSF</b>	\$4,113	<b>Beds</b>	4	<b>Baths</b>	4
<b>Fees</b>	\$9,041	<b>DOM</b>	26				



## 9 E 92 ST

Upper West Side

<b>Type</b>	Townhouse	<b>Status</b>	Contract	<b>Ask</b>	\$14,500,000	<b>Initial</b>	\$15,500,000
<b>SqFt</b>	7,205	<b>PPSF</b>	\$2,013	<b>Beds</b>	7	<b>Baths</b>	7
<b>Fees</b>	N/A	<b>DOM</b>	323				

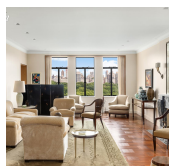
Compass is a licensed real estate broker and abides by Equal Housing Opportunity laws. All material presented herein is intended for informational purposes only. Information is compiled from sources deemed reliable but is subject to errors, omissions, changes in price, condition, sale, or withdrawal without notice. No statement is made as to the accuracy of any description. All measurements and square footages are approximate. This is not intended to solicit property already listed. Nothing herein shall be construed as legal, accounting or other professional advice outside the realm of real estate brokerage.



## 11 BEACH ST #PHD

Tribeca

<b>Type</b>	Condo	<b>Status</b>	Contract	<b>Ask</b>	\$13,500,000	<b>Initial</b>	N/A
<b>Sqft</b>	5,457	<b>PPSF</b>	\$2,474	<b>Beds</b>	5	<b>Baths</b>	6
<b>Fees</b>	\$15,557	<b>DOM</b>	N/A				



## 211 CENTRAL PK W #10F

Upper West Side

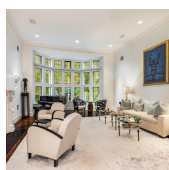
<b>Type</b>	Coop	<b>Status</b>	Contract	<b>Ask</b>	\$12,000,000	<b>Initial</b>	\$12,000,000
<b>Sqft</b>	N/A	<b>PPSF</b>	N/A	<b>Beds</b>	3	<b>Baths</b>	4
<b>Fees</b>	\$6,883	<b>DOM</b>	13				



## 301 E 80 ST #19B

Yorkville

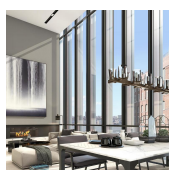
<b>Type</b>	Condo	<b>Status</b>	Contract	<b>Ask</b>	\$9,700,000	<b>Initial</b>	\$9,700,000
<b>Sqft</b>	3,448	<b>PPSF</b>	\$2,814	<b>Beds</b>	4	<b>Baths</b>	4
<b>Fees</b>	\$9,655	<b>DOM</b>	143				



## 151 E 72 ST

Lenox Hill

<b>Type</b>	Townhouse	<b>Status</b>	Contract	<b>Ask</b>	\$8,950,000	<b>Initial</b>	\$9,950,000
<b>Sqft</b>	6,500	<b>PPSF</b>	\$1,377	<b>Beds</b>	5	<b>Baths</b>	5
<b>Fees</b>	\$13,696	<b>DOM</b>	26				



## 522 W 29 ST #7A

Chelsea

<b>Type</b>	Condo	<b>Status</b>	Contract	<b>Ask</b>	\$8,500,000	<b>Initial</b>	\$8,500,000
<b>Sqft</b>	3,586	<b>PPSF</b>	\$2,371	<b>Beds</b>	5	<b>Baths</b>	5
<b>Fees</b>	\$9,982	<b>DOM</b>	122				



## 255 W 84 ST #THIRDFLOOR2AE

Upper West Side

<b>Type</b>	Condo	<b>Status</b>	Contract	<b>Ask</b>	\$7,750,000	<b>Initial</b>	\$7,750,000
<b>Sqft</b>	4,717	<b>PPSF</b>	\$1,643	<b>Beds</b>	5	<b>Baths</b>	4
<b>Fees</b>	\$8,814	<b>DOM</b>	28				

Compass is a licensed real estate broker and abides by Equal Housing Opportunity laws. All material presented herein is intended for informational purposes only. Information is compiled from sources deemed reliable but is subject to errors, omissions, changes in price, condition, sale, or withdrawal without notice. No statement is made as to the accuracy of any description. All measurements and square footages are approximate. This is not intended to solicit property already listed. Nothing herein shall be construed as legal, accounting or other professional advice outside the realm of real estate brokerage.



## 169 HUDSON ST #6N

Tribeca

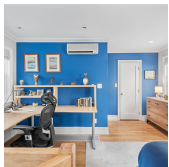
<b>Type</b>	Condo	<b>Status</b>	Contract	<b>Ask</b>	\$7,500,000	<b>Initial</b>	N/A
<b>Sqft</b>	3,752	<b>PPSF</b>	\$1,999	<b>Beds</b>	3	<b>Baths</b>	3.5
<b>Fees</b>	\$6,257	<b>DOM</b>	N/A				



## 993 PK AVE #6S

Upper West Side

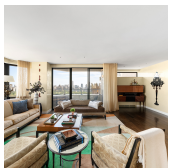
<b>Type</b>	Coop	<b>Status</b>	Contract	<b>Ask</b>	\$7,475,000	<b>Initial</b>	\$7,995,000
<b>Sqft</b>	3,300	<b>PPSF</b>	\$2,266	<b>Beds</b>	4	<b>Baths</b>	3.5
<b>Fees</b>	\$8,550	<b>DOM</b>	189				



## 244 W 75 ST

Upper West Side

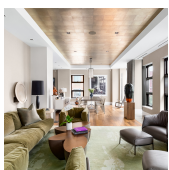
<b>Type</b>	Townhouse	<b>Status</b>	Contract	<b>Ask</b>	\$7,195,000	<b>Initial</b>	\$7,495,000
<b>Sqft</b>	4,666	<b>PPSF</b>	\$1,543	<b>Beds</b>	N/A	<b>Baths</b>	N/A
<b>Fees</b>	\$4,384	<b>DOM</b>	109				



## 22 W 66 ST #21/22

Lincoln Square

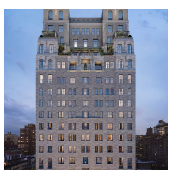
<b>Type</b>	Condo	<b>Status</b>	Contract	<b>Ask</b>	\$6,950,000	<b>Initial</b>	\$9,450,000
<b>Sqft</b>	4,400	<b>PPSF</b>	\$1,580	<b>Beds</b>	5	<b>Baths</b>	6
<b>Fees</b>	\$13,235	<b>DOM</b>	720				



## 385 W 12 ST #4E

West Village

<b>Type</b>	Condo	<b>Status</b>	Contract	<b>Ask</b>	\$6,950,000	<b>Initial</b>	\$6,950,000
<b>Sqft</b>	2,526	<b>PPSF</b>	\$2,752	<b>Beds</b>	3	<b>Baths</b>	2
<b>Fees</b>	\$7,470	<b>DOM</b>	10				

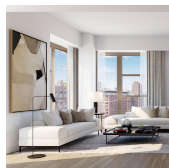


## 301 E 80 ST #15A

Yorkville

<b>Type</b>	Condo	<b>Status</b>	Contract	<b>Ask</b>	\$6,750,000	<b>Initial</b>	\$6,750,000
<b>Sqft</b>	2,615	<b>PPSF</b>	\$2,582	<b>Beds</b>	3	<b>Baths</b>	3.5
<b>Fees</b>	\$7,188	<b>DOM</b>	399				

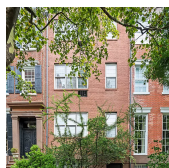
Compass is a licensed real estate broker and abides by Equal Housing Opportunity laws. All material presented herein is intended for informational purposes only. Information is compiled from sources deemed reliable but is subject to errors, omissions, changes in price, condition, sale, or withdrawal without notice. No statement is made as to the accuracy of any description. All measurements and square footages are approximate. This is not intended to solicit property already listed. Nothing herein shall be construed as legal, accounting or other professional advice outside the realm of real estate brokerage.



## 251 W 91 ST #19C

Upper West Side

<b>Type</b>	Condo	<b>Status</b>	Contract	<b>Ask</b>	\$6,600,000	<b>Initial</b>	\$6,600,000
<b>Sqft</b>	2,377	<b>PPSF</b>	\$2,777	<b>Beds</b>	3	<b>Baths</b>	2
<b>Fees</b>	\$5,217	<b>DOM</b>	N/A				



## 159 W 13 ST

West Village

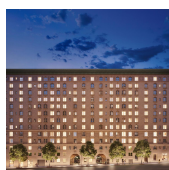
<b>Type</b>	Townhouse	<b>Status</b>	Contract	<b>Ask</b>	\$6,500,000	<b>Initial</b>	\$6,500,000
<b>Sqft</b>	N/A	<b>PPSF</b>	N/A	<b>Beds</b>	6	<b>Baths</b>	6
<b>Fees</b>	N/A	<b>DOM</b>	29				



## 200 AMSTERDAM AVE #26C

Upper West Side

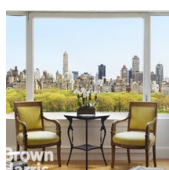
<b>Type</b>		<b>Status</b>	Contract	<b>Ask</b>	\$6,250,000	<b>Initial</b>	\$6,140,000
<b>Sqft</b>	2,092	<b>PPSF</b>	\$2,988	<b>Beds</b>	2	<b>Baths</b>	2
<b>Fees</b>	\$5,845	<b>DOM</b>	633				



## 225 W 86 ST #1009

Upper West Side

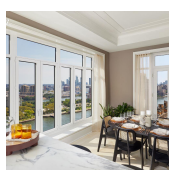
<b>Type</b>	Condo	<b>Status</b>	Contract	<b>Ask</b>	\$5,995,000	<b>Initial</b>	\$6,450,000
<b>Sqft</b>	2,169	<b>PPSF</b>	\$2,764	<b>Beds</b>	3	<b>Baths</b>	2
<b>Fees</b>	\$5,359	<b>DOM</b>	138				



## 75 CENTRAL PK W #15D

Lincoln Square

<b>Type</b>	Coop	<b>Status</b>	Contract	<b>Ask</b>	\$5,895,000	<b>Initial</b>	\$6,000,000
<b>Sqft</b>	N/A	<b>PPSF</b>	N/A	<b>Beds</b>	2	<b>Baths</b>	2
<b>Fees</b>	\$5,070	<b>DOM</b>	169				



## 40 E END AVE #12A

Yorkville

<b>Type</b>	Condo	<b>Status</b>	Contract	<b>Ask</b>	\$5,800,990	<b>Initial</b>	\$5,800,990
<b>Sqft</b>	2,229	<b>PPSF</b>	\$2,603	<b>Beds</b>	3	<b>Baths</b>	3
<b>Fees</b>	\$5,827	<b>DOM</b>	123				

Compass is a licensed real estate broker and abides by Equal Housing Opportunity laws. All material presented herein is intended for informational purposes only. Information is compiled from sources deemed reliable but is subject to errors, omissions, changes in price, condition, sale, or withdrawal without notice. No statement is made as to the accuracy of any description. All measurements and square footages are approximate. This is not intended to solicit property already listed. Nothing herein shall be construed as legal, accounting or other professional advice outside the realm of real estate brokerage.



## 30 RIVERSIDE BLVD #30B

Lincoln Square

<b>Type</b>	Condo	<b>Status</b>	Contract	<b>Ask</b>	\$5,500,000	<b>Initial</b>	\$5,500,000
<b>Sqft</b>	1,823	<b>PPSF</b>	\$3,018	<b>Beds</b>	3	<b>Baths</b>	3.5
<b>Fees</b>	\$2,624	<b>DOM</b>	276				



## 500 W 25 ST #5

Chelsea

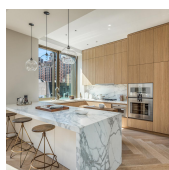
<b>Type</b>	Condo	<b>Status</b>	Contract	<b>Ask</b>	\$5,495,000	<b>Initial</b>	N/A
<b>Sqft</b>	2,375	<b>PPSF</b>	\$2,314	<b>Beds</b>	3	<b>Baths</b>	3
<b>Fees</b>	\$7,238	<b>DOM</b>	N/A				



## 30 RIVERSIDE BLVD #29B

Lincoln Square

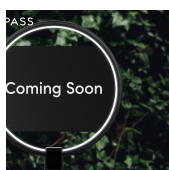
<b>Type</b>	Condo	<b>Status</b>	Contract	<b>Ask</b>	\$5,430,000	<b>Initial</b>	N/A
<b>Sqft</b>	1,823	<b>PPSF</b>	\$2,979	<b>Beds</b>	3	<b>Baths</b>	4
<b>Fees</b>	\$2,612	<b>DOM</b>	N/A				



## 500 W 25 ST #4

Chelsea

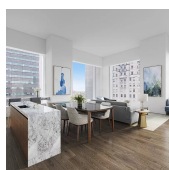
<b>Type</b>	Condo	<b>Status</b>	Contract	<b>Ask</b>	\$5,395,000	<b>Initial</b>	N/A
<b>Sqft</b>	2,375	<b>PPSF</b>	\$2,272	<b>Beds</b>	3	<b>Baths</b>	3
<b>Fees</b>	\$7,238	<b>DOM</b>	N/A				



## 1 5 AVE #11HJK

Greenwich Village

<b>Type</b>	Coop	<b>Status</b>	Contract	<b>Ask</b>	\$5,250,000	<b>Initial</b>	N/A
<b>Sqft</b>	2,700	<b>PPSF</b>	\$1,945	<b>Beds</b>	4	<b>Baths</b>	3
<b>Fees</b>	\$8,369	<b>DOM</b>	N/A				



## 432 PK AVE #38D

Midtown

<b>Type</b>	Condo	<b>Status</b>	Contract	<b>Ask</b>	\$5,250,000	<b>Initial</b>	\$5,250,000
<b>Sqft</b>	1,422	<b>PPSF</b>	\$3,692	<b>Beds</b>	1	<b>Baths</b>	1.5
<b>Fees</b>	\$6,773	<b>DOM</b>	207				

Compass is a licensed real estate broker and abides by Equal Housing Opportunity laws. All material presented herein is intended for informational purposes only. Information is compiled from sources deemed reliable but is subject to errors, omissions, changes in price, condition, sale, or withdrawal without notice. No statement is made as to the accuracy of any description. All measurements and square footages are approximate. This is not intended to solicit property already listed. Nothing herein shall be construed as legal, accounting or other professional advice outside the realm of real estate brokerage.



## 200 AMSTERDAM AVE #10C

Upper West Side

<b>Type</b>	Condo	<b>Status</b>	Contract	<b>Ask</b>	\$5,045,000	<b>Initial</b>	N/A
<b>Sqft</b>	2,437	<b>PPSF</b>	\$2,071	<b>Beds</b>	3	<b>Baths</b>	3
<b>Fees</b>	\$6,300	<b>DOM</b>	N/A				



## 150 E 72 ST #11S

Lenox Hill

<b>Type</b>	Condo	<b>Status</b>	Contract	<b>Ask</b>	\$5,000,000	<b>Initial</b>	\$5,200,000
<b>Sqft</b>	2,347	<b>PPSF</b>	\$2,131	<b>Beds</b>	3	<b>Baths</b>	2
<b>Fees</b>	\$7,973	<b>DOM</b>	120				



## 812 PK AVE #89E

Lenox Hill

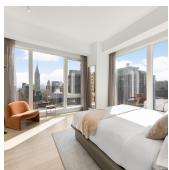
<b>Type</b>	Coop	<b>Status</b>	Contract	<b>Ask</b>	\$4,995,000	<b>Initial</b>	\$5,950,000
<b>Sqft</b>	N/A	<b>PPSF</b>	N/A	<b>Beds</b>	3	<b>Baths</b>	2
<b>Fees</b>	\$7,729	<b>DOM</b>	406				



## 115 CHRISTOPHER ST #PH

West Village

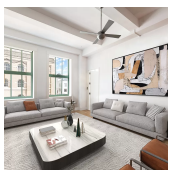
<b>Type</b>	Condo	<b>Status</b>	Contract	<b>Ask</b>	\$4,995,000	<b>Initial</b>	\$4,995,000
<b>Sqft</b>	2,050	<b>PPSF</b>	\$2,437	<b>Beds</b>	2	<b>Baths</b>	2
<b>Fees</b>	\$4,257	<b>DOM</b>	29				



## 138 E 50 ST #48A

Turtle Bay

<b>Type</b>	Condo	<b>Status</b>	Contract	<b>Ask</b>	\$4,900,000	<b>Initial</b>	\$4,900,000
<b>Sqft</b>	1,683	<b>PPSF</b>	\$2,912	<b>Beds</b>	3	<b>Baths</b>	3
<b>Fees</b>	\$4,736	<b>DOM</b>	764				



## 415 GREENWICH ST #7A

Tribeca

<b>Type</b>	Condo	<b>Status</b>	Contract	<b>Ask</b>	\$4,850,000	<b>Initial</b>	\$4,850,000
<b>Sqft</b>	2,318	<b>PPSF</b>	\$2,093	<b>Beds</b>	3	<b>Baths</b>	3
<b>Fees</b>	\$4,940	<b>DOM</b>	30				

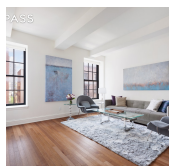
Compass is a licensed real estate broker and abides by Equal Housing Opportunity laws. All material presented herein is intended for informational purposes only. Information is compiled from sources deemed reliable but is subject to errors, omissions, changes in price, condition, sale, or withdrawal without notice. No statement is made as to the accuracy of any description. All measurements and square footages are approximate. This is not intended to solicit property already listed. Nothing herein shall be construed as legal, accounting or other professional advice outside the realm of real estate brokerage.



## 212 WARREN ST #12CD

Battery Park

<b>Type</b>	Condo	<b>Status</b>	Contract	<b>Ask</b>	\$4,750,000	<b>Initial</b>	\$4,750,000
<b>Sqft</b>	2,402	<b>PPSF</b>	\$1,978	<b>Beds</b>	4	<b>Baths</b>	3
<b>Fees</b>	\$6,768	<b>DOM</b>	76				



## 160 W 12 ST #57

Greenwich Village

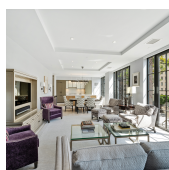
<b>Type</b>	Condo	<b>Status</b>	Contract	<b>Ask</b>	\$4,700,000	<b>Initial</b>	\$4,800,000
<b>Sqft</b>	1,745	<b>PPSF</b>	\$2,694	<b>Beds</b>	2	<b>Baths</b>	2
<b>Fees</b>	\$6,750	<b>DOM</b>	487				



## 500 W 25 ST #6

Chelsea

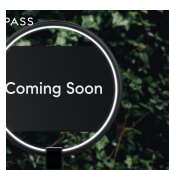
<b>Type</b>	Condo	<b>Status</b>	Contract	<b>Ask</b>	\$4,500,000	<b>Initial</b>	\$4,500,000
<b>Sqft</b>	2,375	<b>PPSF</b>	\$1,895	<b>Beds</b>	3	<b>Baths</b>	3
<b>Fees</b>	\$7,238	<b>DOM</b>	82				



## 959 1 AVE #8J

Turtle Bay

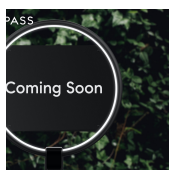
<b>Type</b>	Condo	<b>Status</b>	Contract	<b>Ask</b>	\$4,495,000	<b>Initial</b>	\$4,995,000
<b>Sqft</b>	N/A	<b>PPSF</b>	N/A	<b>Beds</b>	3	<b>Baths</b>	2
<b>Fees</b>	\$3,115	<b>DOM</b>	30				



## 205 E 68 ST #TPHA

Lenox Hill

<b>Type</b>	Condo	<b>Status</b>	Contract	<b>Ask</b>	\$4,495,000	<b>Initial</b>	N/A
<b>Sqft</b>	2,106	<b>PPSF</b>	\$2,135	<b>Beds</b>	3	<b>Baths</b>	3
<b>Fees</b>	\$7,214	<b>DOM</b>	N/A				



## 37 WARREN ST #6A

Tribeca

<b>Type</b>	Condo	<b>Status</b>	Contract	<b>Ask</b>	\$4,395,000	<b>Initial</b>	\$4,495,000
<b>Sqft</b>	2,366	<b>PPSF</b>	\$1,858	<b>Beds</b>	3	<b>Baths</b>	3
<b>Fees</b>	\$6,207	<b>DOM</b>	361				

Compass is a licensed real estate broker and abides by Equal Housing Opportunity laws. All material presented herein is intended for informational purposes only. Information is compiled from sources deemed reliable but is subject to errors, omissions, changes in price, condition, sale, or withdrawal without notice. No statement is made as to the accuracy of any description. All measurements and square footages are approximate. This is not intended to solicit property already listed. Nothing herein shall be construed as legal, accounting or other professional advice outside the realm of real estate brokerage.

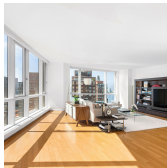




## 368 3 AVE #32B

Kips Bay

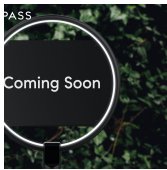
<b>Type</b>	Condo	<b>Status</b>	Contract	<b>Ask</b>	\$4,299,500	<b>Initial</b>	N/A
<b>Sqft</b>	1,619	<b>PPSF</b>	\$2,656	<b>Beds</b>	3	<b>Baths</b>	3
<b>Fees</b>	\$3,808	<b>DOM</b>	N/A				



## 200 CHAMBERS ST #23A

Tribeca

<b>Type</b>	Condo	<b>Status</b>	Contract	<b>Ask</b>	\$4,275,000	<b>Initial</b>	\$4,390,000
<b>Sqft</b>	2,201	<b>PPSF</b>	\$1,943	<b>Beds</b>	3	<b>Baths</b>	3
<b>Fees</b>	\$4,981	<b>DOM</b>	189				



## 1000 PK AVE #4C

Upper East Side

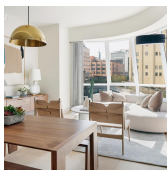
<b>Type</b>	Coop	<b>Status</b>	Contract	<b>Ask</b>	\$4,250,000	<b>Initial</b>	\$4,250,000
<b>Sqft</b>	N/A	<b>PPSF</b>	N/A	<b>Beds</b>	3	<b>Baths</b>	2
<b>Fees</b>	\$6,294	<b>DOM</b>	27				



## 9 MURRAY ST #7W

Tribeca

<b>Type</b>	Condo	<b>Status</b>	Contract	<b>Ask</b>	\$4,150,000	<b>Initial</b>	\$4,150,000
<b>Sqft</b>	2,651	<b>PPSF</b>	\$1,566	<b>Beds</b>	3	<b>Baths</b>	2
<b>Fees</b>	\$3,819	<b>DOM</b>	107				



## 515 W 18 ST #515

Chelsea

<b>Type</b>	Condo	<b>Status</b>	Contract	<b>Ask</b>	\$4,150,000	<b>Initial</b>	\$4,150,000
<b>Sqft</b>	1,591	<b>PPSF</b>	\$2,609	<b>Beds</b>	3	<b>Baths</b>	3
<b>Fees</b>	\$4,618	<b>DOM</b>	39				



## 100 UNITED NATIONS PLZ #34AB

Turtle Bay

<b>Type</b>	Condo	<b>Status</b>	Contract	<b>Ask</b>	\$4,149,000	<b>Initial</b>	\$4,149,000
<b>Sqft</b>	3,129	<b>PPSF</b>	\$1,326	<b>Beds</b>	4	<b>Baths</b>	4
<b>Fees</b>	\$9,865	<b>DOM</b>	81				

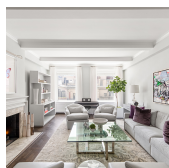
Compass is a licensed real estate broker and abides by Equal Housing Opportunity laws. All material presented herein is intended for informational purposes only. Information is compiled from sources deemed reliable but is subject to errors, omissions, changes in price, condition, sale, or withdrawal without notice. No statement is made as to the accuracy of any description. All measurements and square footages are approximate. This is not intended to solicit property already listed. Nothing herein shall be construed as legal, accounting or other professional advice outside the realm of real estate brokerage.



## 250 W ST #2F

Tribeca

<b>Type</b>	Condo	<b>Status</b>	Contract	<b>Ask</b>	\$3,950,000	<b>Initial</b>	\$3,799,000
<b>Sqft</b>	1,993	<b>PPSF</b>	\$1,982	<b>Beds</b>	2	<b>Baths</b>	3
<b>Fees</b>	\$3,654	<b>DOM</b>	461				



## 1010 5 AVE #6D

Upper East Side

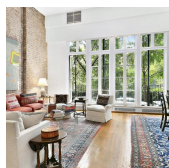
<b>Type</b>	Coop	<b>Status</b>	Contract	<b>Ask</b>	\$3,750,000	<b>Initial</b>	\$4,300,000
<b>Sqft</b>	N/A	<b>PPSF</b>	N/A	<b>Beds</b>	3	<b>Baths</b>	2
<b>Fees</b>	\$5,117	<b>DOM</b>	133				



## 15 E 30 ST #32E

Nomad

<b>Type</b>	Condo	<b>Status</b>	Contract	<b>Ask</b>	\$3,750,000	<b>Initial</b>	\$3,750,000
<b>Sqft</b>	1,393	<b>PPSF</b>	\$2,693	<b>Beds</b>	2	<b>Baths</b>	2
<b>Fees</b>	\$4,282	<b>DOM</b>	195				



## 48 GRAMERCY PK N #2

Gramercy

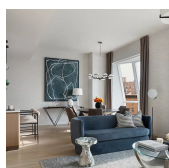
<b>Type</b>	Coop	<b>Status</b>	Contract	<b>Ask</b>	\$3,650,000	<b>Initial</b>	\$3,800,000
<b>Sqft</b>	N/A	<b>PPSF</b>	N/A	<b>Beds</b>	1	<b>Baths</b>	2
<b>Fees</b>	\$4,036	<b>DOM</b>	195				



## 475 GREENWICH ST #4A

Tribeca

<b>Type</b>	Condo	<b>Status</b>	Contract	<b>Ask</b>	\$3,595,000	<b>Initial</b>	\$3,695,000
<b>Sqft</b>	1,862	<b>PPSF</b>	\$1,931	<b>Beds</b>	3	<b>Baths</b>	3
<b>Fees</b>	\$4,680	<b>DOM</b>	122				



## 515 W 18 ST #607

Chelsea

<b>Type</b>	Condo	<b>Status</b>	Contract	<b>Ask</b>	\$3,575,000	<b>Initial</b>	\$3,575,000
<b>Sqft</b>	1,338	<b>PPSF</b>	\$2,672	<b>Beds</b>	2	<b>Baths</b>	2
<b>Fees</b>	\$4,101	<b>DOM</b>	71				

Compass is a licensed real estate broker and abides by Equal Housing Opportunity laws. All material presented herein is intended for informational purposes only. Information is compiled from sources deemed reliable but is subject to errors, omissions, changes in price, condition, sale, or withdrawal without notice. No statement is made as to the accuracy of any description. All measurements and square footages are approximate. This is not intended to solicit property already listed. Nothing herein shall be construed as legal, accounting or other professional advice outside the realm of real estate brokerage.